

Kolibri

- Kolibri applications 19
- Kolibri dimensions 20
- Kolibri types 21
- Kolibri sizes 22
- Kolibri height 10 23
- Kolibri height 15 24
- Kolibri height 22 26
- Kolibri height 30 28
- Kolibri height 40 33
- Kolibri height 50 35
- Kolibri height 65 37
- Kolibri parts 39
- Kolibri assembly 40
- Kolibri flange connect. 42
- Kolibri part numbers 44



closed + open

The inexpensive energy chain for light-weight applications. The patented opening offers high rigid torsion behaviour and comfortable handling in one.

- easy access by flap stays
- extremely rigid and wear resistant
- unique separation with the pinch stay
- smallest dimensions

All ekd plastic energy chains are equipped with integrated connectors. Additional mounting parts are not needed.

Dimensions

bending radii:	15	to	300 mm
inner height:	7	to	50 mm
inner width:	7	to	205 mm
weight:	0.06	to	2.7 kg/m

Travel distance

The maximum travel distance is given by the arrangement and the load (weight of the lines). At normal arrangements the maximum travel distance is double the free carrying length. Support rollers or similar equipment may exceed this value.

In gliding arrangements travel distances up to 100 m are possible (according to the application).

For longer travels see chapter on design guidelines.

Travel speed

There are no limits for the travel speed in general. But with gliding arrangements application specific influences have to be taken into account.

Acceleration

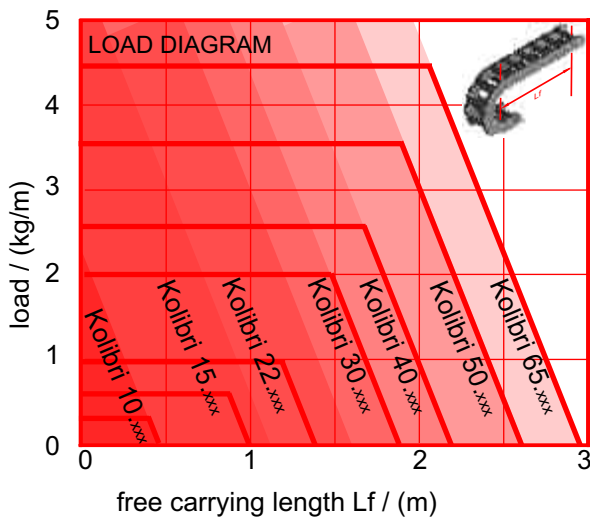
There are no limits for the accelerations, in general. Limits may occur through the tensile stresses at high line weights.

Temperature

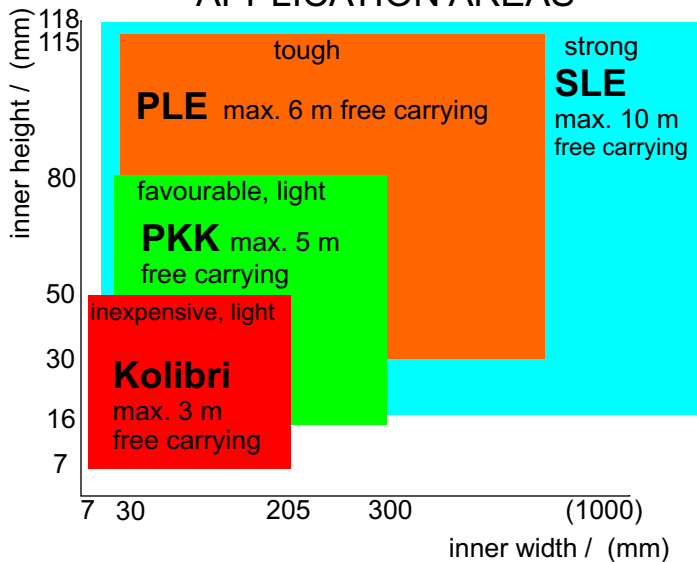
Long term temperature limits are between -20°C and 100°C.

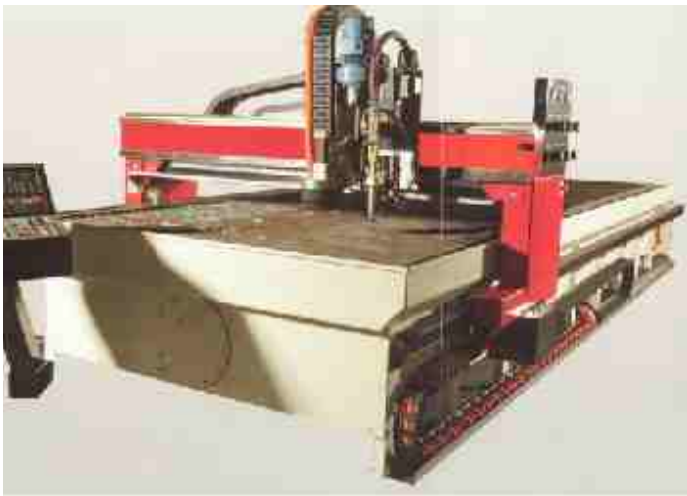
Special variants

ELTOLA	... silent running
ALLROUND	... all movements
ATEX	... EX-protection
ESD	... antistatic
V-0	... self extinguishing



APPLICATION AREAS





robotics, handling,
transportation, paper production,
textile industries, water plants



Content

Design guidelines

Order infos

Kolibri

PKK

PLE

SLE

GKA

SFK

PFR

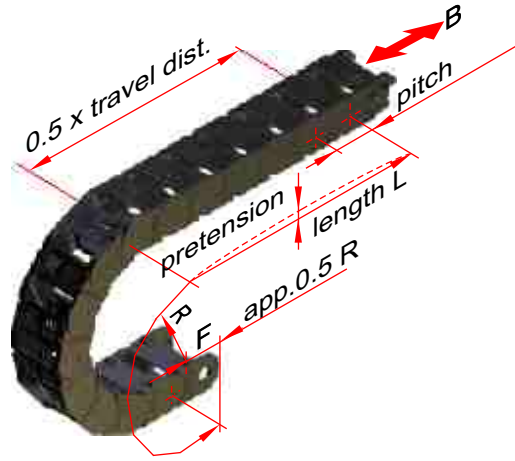
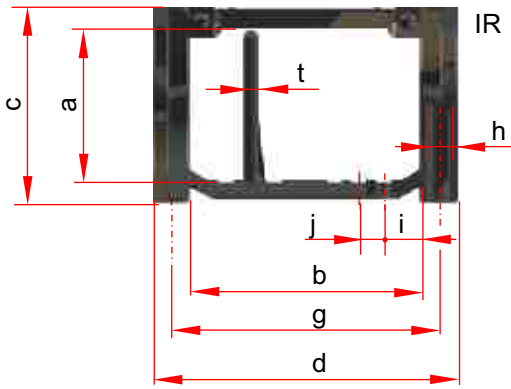
Troughs

Systems

Materials

Informations





Kolibri c . d .type	prev. name		pitch	dimensions								weight kg/m	
				a	b	c	d	g	h	i ¹⁾	j ¹⁾		t ²⁾
10.012.4	00.3		15	Ø7	10	12	12	3	-	-	-	0.05	
15.015.3	.4	0	0.3	20	Ø10	15	15	15	4	-	-	0.15	
15.036.5		02.5	18	10	25	15	36	30	4	-	-	0.30	
15.037.3		02	20	10	24	15	37	30	4	-	-	0.30	
15.051.0		03	20	10	39	15	51	44	4	-	-	0.35	
22.025.4		04.3	30	17	15	22	25	19,4	4	-	-	0.20	
22.038.0		05.0	26	17	27	22	38	31	4	8	10	2	
22.048.0		06	26	17	36	22	48	42	4	13	10	2	
22.060.5		07.5	26	16	48	22	60	54	4	9,5	10	2	
30.030.3		1	40	24	18	30	30	23	4	-	-	0.50	
30.050.0 .1	.5	10.0	10.5	35	23	34	30	50	40	5	9,5	5	3 ²⁾
30.060.0 .1		11.0		35	23	44	30	60	50	5	9,5	5	3
30.080.0 .1 .2 .4 .5		12.0	12.5	35	23	64	30	80	70	5	9,5	5	3 ²⁾
30.095.0 .1		13.0		35	23	79	30	95	85	5	12	5	3
30.125.0 .1		14.0		35	23	109	30	125	115	5	12	5	3
40.062.2	.5	15.0	15.5	45	31	48	40	62	54	5	8	10	4
40.075.2		16.0		45	31	60	40	75	67	5	8	10	4
50.065.0	.5	21.0	21.5	55	40	48	50	65	55	6	9	9	2
50.095.0 .2 .5		19.0	19.5	55	40	78	50	95	85	6	6,5	5	2
50.125.0		22.0		55	40	108	50	125	115	6	6,5	5	3
50.150.0	.5	20.0	20.5	55	40	133	50	150	140	6	6,5	5	3
65.095.1	.5		24.5	70	50	77	65	95	85	6	13,5	10	4
65.135.1	.5		25.5	70	50	117	65	135	125	6	13,5	10	4
65.195.1	.5		27.5	70	50	177	65	195	185	6	13,5	10	4
65.225.0		29.0		70	50	205	65	225	215	6	17,5	5	4

1) not Kolibri *.2

2) for Kolibri *.2 is t=4 for Kolibri *.5 is t=2

Kolibri 00.000.0

standard type
flap open bars in inner radius
separable with pinch stay
integrated connector



Kolibri 00.000.1

openable in outer radius
flap open bars in outer radius
separable with pinch stay
integrated connector



Kolibri 00.000.2

rigid version
flap open bars in inner radius
separable with PZ
integrated connector



Kolibri 00.000.3

one part chain links
not openable
not separable
integrated connector



Kolibri 00.000.4

film stay
film stay in inner radius
not separable
integrated connector



Kolibri 00.000.5

closed type
flap open covers in outer radius
separable with pinch stay
integrated connector



Kolibri	c . d .type		prev. name	radius									
10.012.4			00.3	15	30	50							
15.015.3	.4		0	0.3	17,5 ²⁾	20	30						
15.036.5				02.5		30	50						
15.037.3			02		20								
15.051.0			03		20	30							
22.025.4			04.3			35	70	100					
22.038.0			05.0			35	50	70	100				
22.048.0			06			35	70						
22.060.5				07.5		50	70	100					
30.030.3			1			40		100		200			
30.050.0	.1	.5	10.0	10.5		40 ¹⁾	60	75	100	150	200		
30.060.0	.1		11.0			40	50	75	100	150	200		
30.080.0	.1 .2 .4 .5		12.0	12.5		40 ¹⁾	60 ⁵⁾	75	100	150	200		
30.095.0	.1		13.0			40	75	100	125	150	200		
30.125.0	.1		14.0			40	75	100	150	200			
40.062	.2	.5	15.0	15.5			60 ³⁾	75	100	150	200		
40.075.2			16.0				60	75	100	150	200		
50.065.0	.5		21.0	21.5			75 ¹⁾	100	125 ¹⁾	150	175 ¹⁾	200	250
50.095.0	.2	.5	19.0	19.5			75 ¹⁾	100	125 ¹⁾	150	175 ¹⁾	200	250
50.125.0			22.0				75	100	150	200	250		
50.150.0	.5		20.0	20.5			75 ¹⁾	100	150	200	250		
65.095.1	.5		24.1	24.5					125	150	200	300	
65.135.1	.5			25.5					125	150	200	300 ⁴⁾	
65.195.1	.5			27.5					125	150	200	300	
65.225.0			29.0						100	125	150	200	300

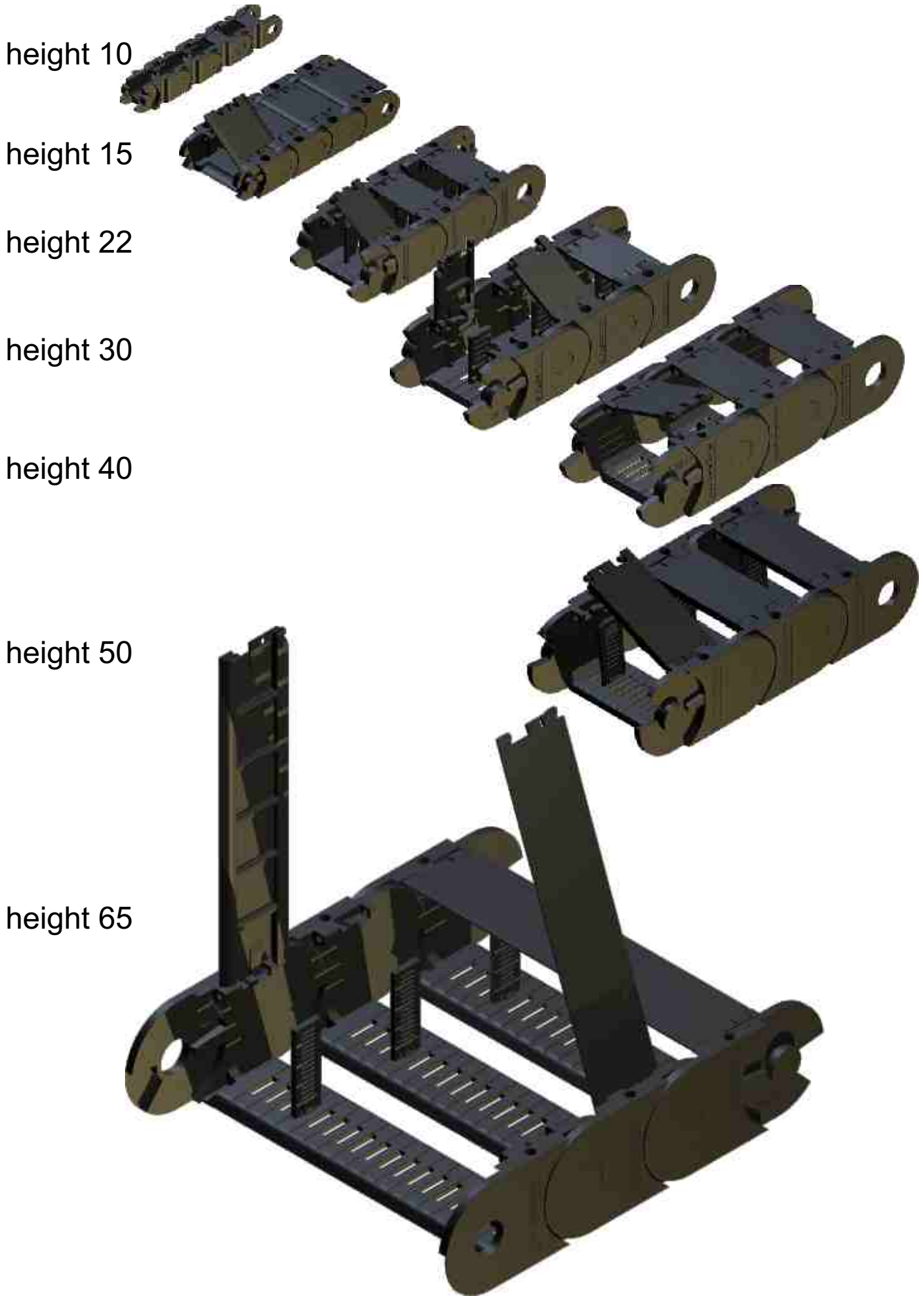
1) not Kolibri xx.xxx.5

2) only Kolibri 15.015.3

3) only Kolibri 40.062.2

4) additional R400

5) only Kolibri 30.080.5



Kolibri HEIGHT 10

inner height 7, inner width 7

max. 6.3

Kolibri 10.012.4 *Kolibri 00.3*

one part link
film stay in inner radius
integrated connector or separate connectors
space (axb): $\varnothing 7$ not separable
bend radius: 15 / 30 / 50
weight: 0,05 kg/m
free carrying length: 0.4 m at 0.3 kg/m load
pitch: 15

order example:

Kolibri 10.012.4 / 50 x 1005

type / radius x length





Kolibri HEIGHT 15

inner height 10, inner width 10 to 39



Kolibri 15.015.3 *Kolibri 0*

one part chain link
not openable
connector as separate part
space (axb): Ø10 not separable
bend radius: 17.5 / 20 / 30
weight: 0.15 kg/m
free carrying length: 0,9m at 0.9 kg/m load
pitch: 20

order example:

Kolibri 15.015.3 / 30 x 1000

type / radius x length

Kolibri 15.015.4 *Kolibri 0.3*

one part chain link
film-stay in inner radius
connector as separate part (see Kolibri 15.015.3)
space (axb): Ø10 not separable
bend radius: 20 / 30
weight: 0.15 kg/m
free carrying length: 0.9 m at 0.9 kg/m load
pitch: 20

order example:

Kolibri 15.015.4 / 30 x 1000

type / radius x length

Kolibri 15.036.5 *Kolibri 02.5*

closed type
flap covers in outer radius
integrated connectors
space (axb): 10 x 25 not separable
bend radius: 30 / 50
weight: 0.3 kg/m
free carrying length: 0.9m at 0.9 kg/m load
pitch: 18

order example:

Kolibri 15.036.5 / 30 x 1008

type / radius x length



Kolibri HEIGHT 15

inner height 10, inner width 10 to 39



Kolibri 15.037.3

Kolibri 02 ASO

one part chain link
not openable
integrated connectors

space (axb): 10 x 24 not separable
bend radius: 20
weight: 0.3 kg/m
free carrying length: 0.9 at 0.9 kg/m load
pitch: 20

order example:

Kolibri 15.037.3 / 20 x 1000

type / radius x length



Kolibri 15.051.0

Kolibri 03

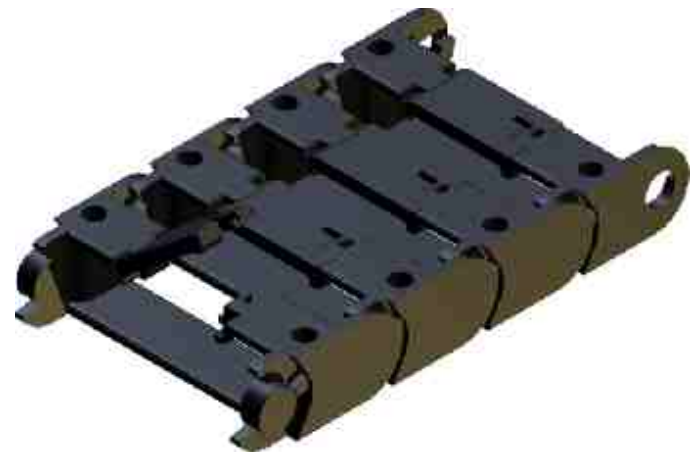
standard type
flap stay in inner radius
integrated connectors

space (axb): 10 x 39 not separable
bend radius: 20 / 30
weight: 0.35 kg/m
free carrying length: 0.9 m at 0.9 kg/m load
pitch: 20

order example:

Kolibri 15.051.0 / 30 x 1000

type / radius x length





Kolibri HEIGHT 22

inner height 16 to 22, inner width 15 to 48



Kolibri 22.025.4

Kolibri 04.3

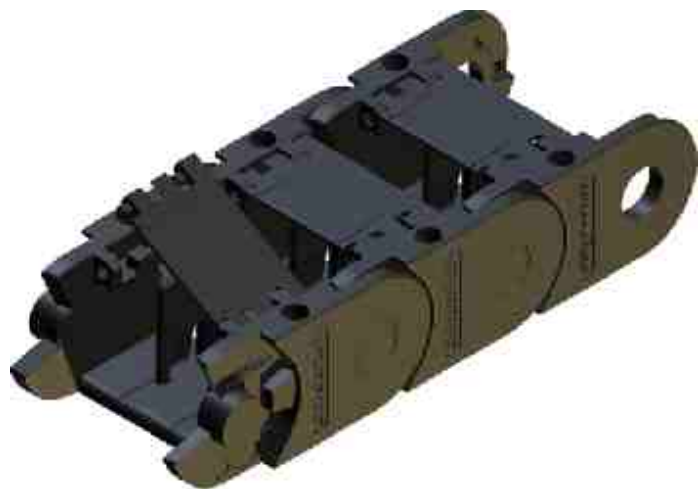
one part chain link
film stay
integrated connectors

space (axb): 17 x 15 not separable
bend radius: 35 / 70 / 100
weight: 0.20 kg/m
free carrying length: 1.3 m at 1.5 kg/m load
pitch: 30

order example:

Kolibri 22.025.4 / 35 x 1020

type / radius x length



Kolibri 22.038.0

Kolibri 05.0

standard type
flap stay in inner radius
integrated connectors

space (axb): 17 x 27 separable (PZ)
bend radius: 35 / 50 / 70 / 100
weight: 0.34 kg/m
free carrying length: 1.5 m at 1.0 kg/m load
pitch: 26

order example:

Kolibri 22.038.0 / 35 x 1040

type / radius x length

Kolibri HEIGHT 22

inner height 16 to 22, inner width 15 to 48

max. 14-20

Kolibri 22.048.0

Kolibri 06

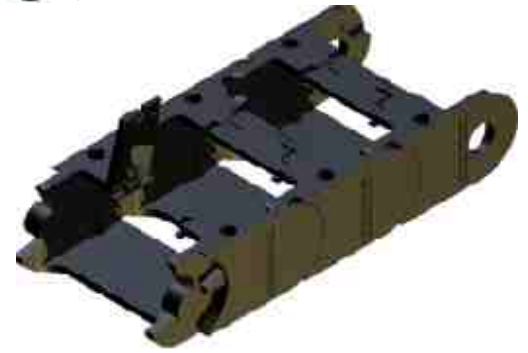
open type
flap stay in inner radius
integrated connectors

space (axb): 17 x 36 not separable
bend radius: 35 / 70
weight: 0.37 kg/m
free carrying length: 1.3 m at 1.5 kg/m load
pitch: 26

order example:

Kolibri 22.048.0 / 35 x 1200

type / radius x length



Kolibri 22.060.5

Kolibri 07.5

closed type
flap stay in outer radius
integrated connectors

space (axb): 16 x 48 separable (PZ)
bend radius: 50 / 70 / 100
weight: 0.54 kg/m
free carrying length: 1.3 m at 1.5 kg/m load
pitch: 26

order example:

Kolibri 22.060.5 / 100 x 1014

type / radius x length





Kolibri HEIGHT 30

inner height 23 to 24, inner width 18 to 109

Kolibri 30.030.3

Kolibri 1

one part chain link
not openable
integrated connectors

space (axb): **24 x 18 not separable**
bend radius: 40 / 100 / 200
weight: 0.50 kg/m
free carrying length: 1.5 m at 2.0 kg/m load
pitch: 40

order example:

Kolibri 22.060.0 / 100 x 1200

type / radius x length



Kolibri 30.050.0

Kolibri 10.0

standard type
flap stay in inner radius
integrated connectors

space (axb): **23 x 34 separable (PZ)**
bend radius: 40 / 60 / 75 / 100 / 150 / 200
weight: 0.54 kg/m
free carrying length: 1.5 m at 2.0 kg/m load
pitch: 35

order example:

Kolibri 30.050.0 / 100 x 1225

type / radius x length



Kolibri 30.050.1

Kolibri 10.1

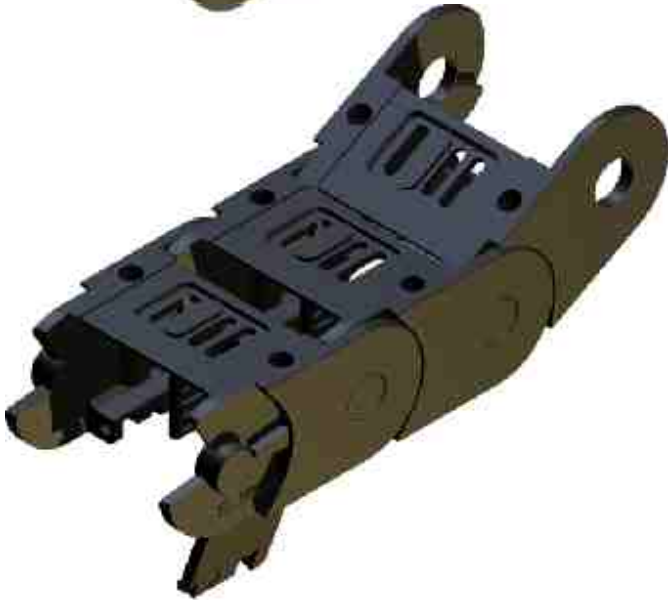
open type
flap stay in outer radius
integrated connectors

space (axb): **23 x 34 separable (PZ)**
bend radius: 40 / 60 / 75 / 100 / 150 / 200
weight: 0.54 kg/m
free carrying length: 1.5 m at 2.0 kg/m load
pitch: 35

order example:

Kolibri 30.050.0 / 100 x 1225

type / radius x length



Kolibri 30.050.5

Kolibri 10.5

closed type
flap covers in outer radius
integrated connectors

space (axb): **23 x 34 separable (PZ)**
bend radius: 60 / 75 / 100 / 150 / 200
weight: 0.58 kg/m
free carrying length: 1.5 m at 2.0 kg/m load
pitch: 35

order example:

Kolibri 30.050.5 / 100 x 1225

type / radius x length



Kolibri HEIGHT 30

inner height 23 to 24, inner width 18 to 109



Kolibri 30.060.0

Kolibri 11.0

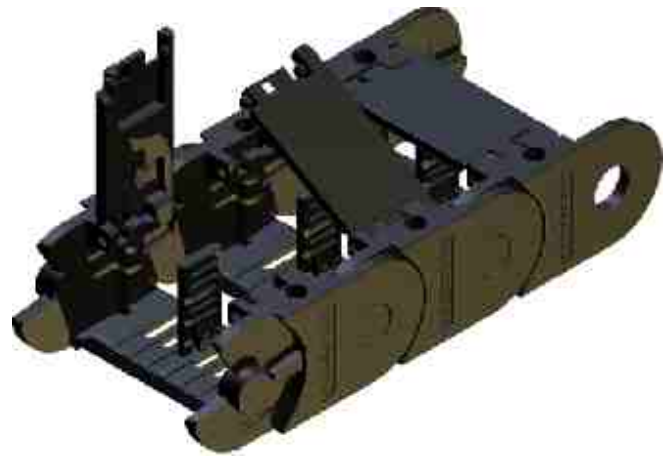
standard type
flap stay in inner radius
integrated connectors

space (axb): 23 x 44 separable (PZ)
bend radius: 40 / 50 / 75 / 100 / 150 / 200
weight: 0.61 kg/m
free carrying length: 1.5 m at 2.0 kg/m load
pitch: 35

order example:

Kolibri 30.060.0 / 100 x 1225

type / radius x length



Kolibri 30.060.1

Kolibri 11.1

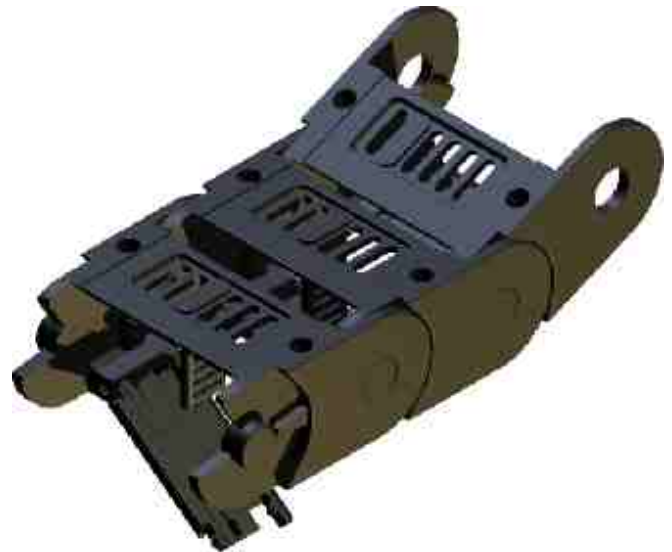
open type
flap stay in outer radius
integrated connectors

space (axb): 23 x 44 separable (PZ)
bend radius: 40 / 50 / 75 / 100 / 150 / 200
weight: 0.61 kg/m
free carrying length: 1.5 m at 2.0 kg/m load
pitch: 35

order example:

Kolibri 30.060.1 / 100 x 1225

type / radius x length



Kolibri 30.080.0

Kolibri 12.0

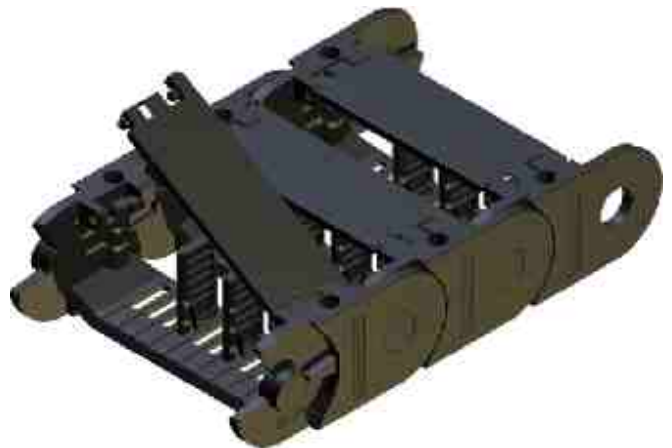
standard type
flap stay in inner radius
integrated connectors

space (axb): 23 x 64 separable (PZ)
bend radius: 40 / 50 / 75 / 100 / 150 / 200
weight: 0.65 kg/m
free carrying length: 1.5 m at 2.0 kg/m load
pitch: 35

order example:

Kolibri 30.080.0 / 100 x 1225

type / radius x length



Kolibri 30.080.1

Kolibri 12.1

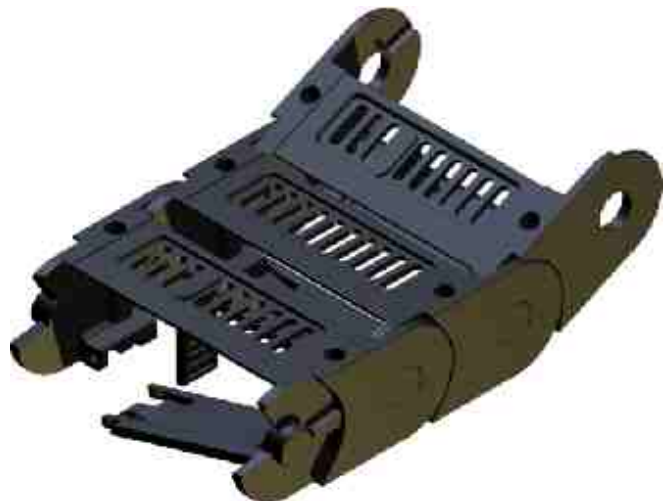
open type
flap stay in inner radius
integrated connectors

space (axb): 23 x 64 separable (PZ)
bend radius: 40 / 50 / 75 / 100 / 150 / 200
weight: 0.65 kg/m
free carrying length: 1.5 m at 2.0 kg/m load
pitch: 35

order example:

Kolibri 30.080.1 / 100 x 1225

type / radius x length





Kolibri HEIGHT 30

inner height 23 to 24, inner width 18 to 109

Kolibri 30.080.2

Kolibri 12.2

rigid type
flap stay in inner radius
integrated connectors

space (axb): 21 x 64 separable (PZ)
bend radius: 40 / 75 / 100 / 150 / 200
weight: 0.7 kg/m
free carrying length: 1.5 m at 2.0 kg/m load
pitch: 35

order example:

Kolibri 30.080.2 / 100 x 1225

type / radius x length

Kolibri 30.080.4

Kolibri 12.4

one part chain link
lining without assembly
integrated connectors

space (axb): 21 x 64 separable (PZ)
bend radius: 40 / 75 / 100 / 150 / 200
weight: 0.65 kg/m
free carrying length: 1.5 m at 2.0 kg/m load
pitch: 35

order example:

Kolibri 30.080.4 / 100 x 1225

type / radius x length

Kolibri 30.080.5

Kolibri 12.5

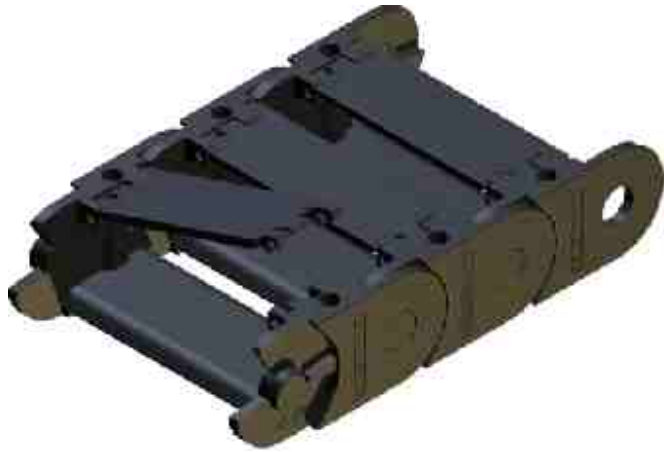
closed type
flap covers in outer radius
integrated connectors

space (axb): 23 x 64 separable (PZ)
bend radius: 60 / 75 / 100 / 150 / 200
weight: 0.7 kg/m
free carrying length: 1.5 m at 2.0 kg/m load
pitch: 35

order example:

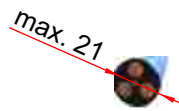
Kolibri 30.080.5 / 100 x 1225

type / radius x length



Kolibri HEIGHT 30

inner height 23 to 24, inner width 18 to 109



Kolibri 30.095.0

Kolibri 13.0

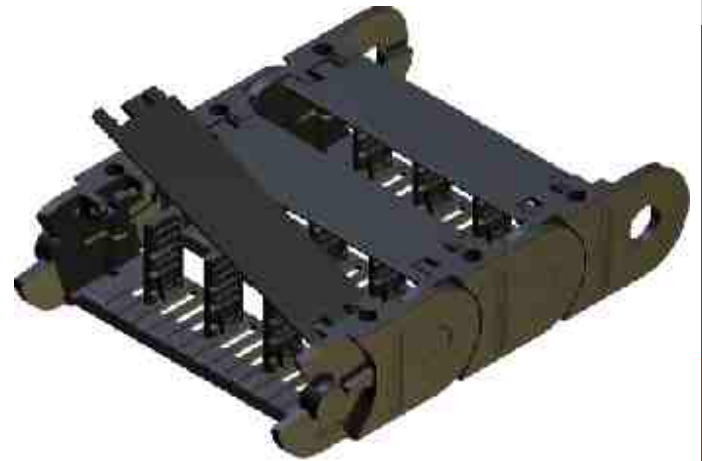
standard type
flap stays in inner radius
integrated connectors

space (axb): 23 x 79 separable (PZ)
bend radius: 40 / 75 / 100 / 125 / 150 / 200
weight: 0.75 kg/m
free carrying length: 1.5 m at 2.0 kg/m load
pitch: 35

order example:

Kolibri 30.095.0 / 100 x 1225

type / radius x length



Kolibri 30.095.1

Kolibri 13.1

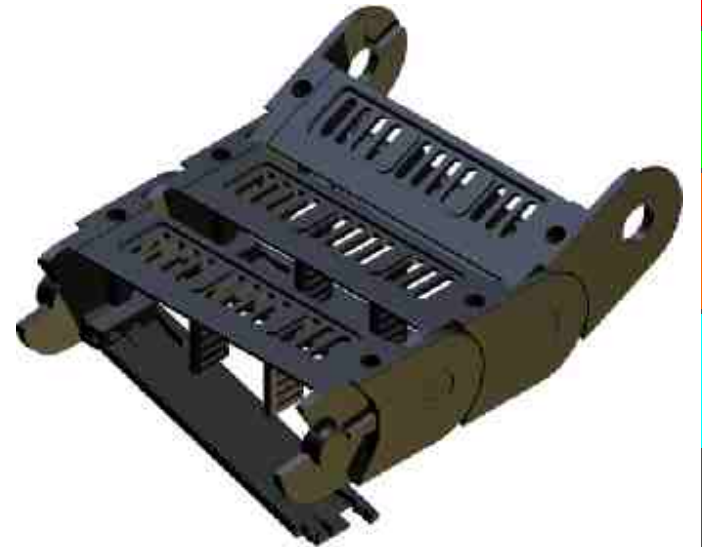
open type
flap stays in outer radius
integrated connectors

space (axb): 23 x 79 separable (PZ)
bend radius: 40 / 75 / 100 / 125 / 150 / 200
weight: 0.75 kg/m
free carrying length: 1.5 m at 2.0 kg/m load
pitch: 35

order example:

Kolibri 30.095.1 / 100 x 1225

type / radius x length





Kolibri HEIGHT 30

inner height 23 to 24, inner width 18 to 109

Kolibri 30.125.0

Kolibri 14.0

standard type
flap stay in inner radius
integrated connectors

space (axb): 23 x 109 separable (PZ)
bend radius: 40 / 75 / 100 / 150 / 200
weight: 0.87 kg/m
free carrying: 1.5 m at 2.0 kg/m load
pitch: 35

order example:

Kolibri 30.125.0 / 100 x 1225

type / radius x length

Kolibri 30.125.1

Kolibri 14.1

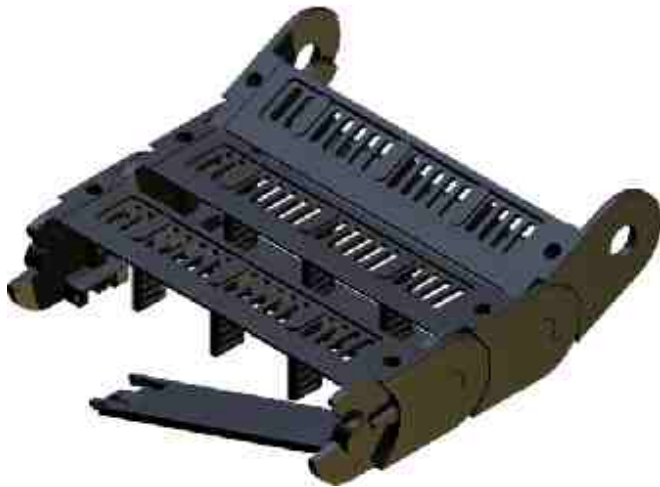
open type
flap stay in outer radius
integrated connectors

space (axb): 23 x 109 separable (PZ)
bend radius: 40 / 75 / 100 / 150 / 200
weight: 0.87 kg/m
free carrying: 1.5 m at 2.0 kg/m load
pitch: 35

order example:

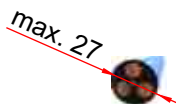
Kolibri 30.125.1 / 100 x 1225

type / radius x length



Kolibri HEIGHT 40

inner height 31, inner width 48 to 60



Kolibri 40.062.2 *Kolibri 15.2*

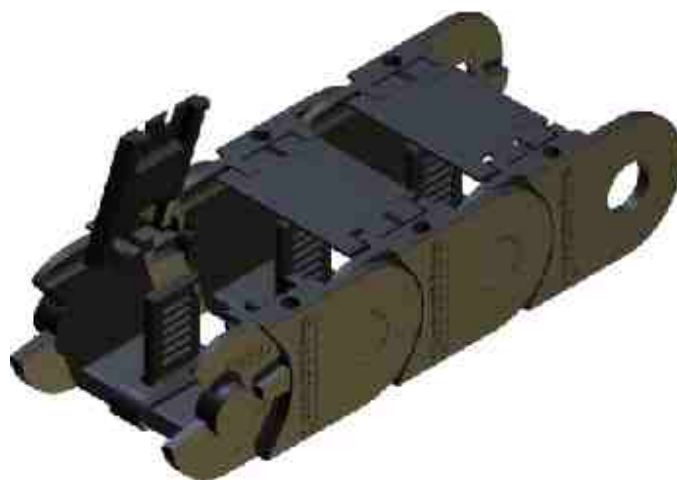
rigid type
flap stay in inner radius
integrated connectors

space (axb): 31 x 48 separable (PS, KL)
bend radius: 60 / 75 / 100 / 150 / 200
weight: 0.91 kg/m
free carrying length: 2.0 m at 1.0 kg/m load
pitch: 45

order example:

Kolibri 40.062.2 / 100 x 1260

type / radius x length



Kolibri 40.062.5 *Kolibri 15.5*

closed type
flap covers in outer radius
integrated connectors

space (axb): 31 x 48 separable (PS, KL)
bend radius: 60 / 75 / 100 / 150 / 200
weight: 0.93 kg/m
free carrying length: 2.0 m at 1.0 kg/m load
pitch: 45


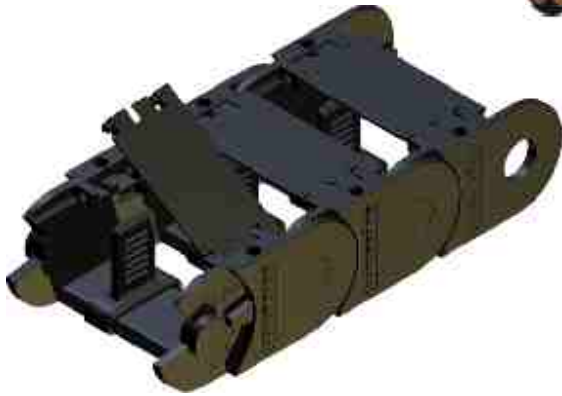
order example:

Kolibri 40.062.5 / 100 x 1260

type / radius x length



max. 27

Kolibri HEIGHT 40

inner height 31, inner width 48 to 60

Kolibri 40.075.2 *Kolibri 16.2*

rigid type
flap stay in inner radius
integrated connectors
space (axb): **29 x 60** separable (PZ)
bend radius: 60 / 75 / 100 / 150 / 200
weight: 1.05 kg/m
free carrying length: 2.0 m at 1.0 kg/m load
pitch: 45

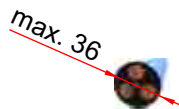
order example:

Kolibri 40.075.2 / 100 x 1260

type / radius x length

Kolibri HEIGHT 50

inner height 38 to 40, inner width 48 to 134



Kolibri 50.065.0

Kolibri 21.0

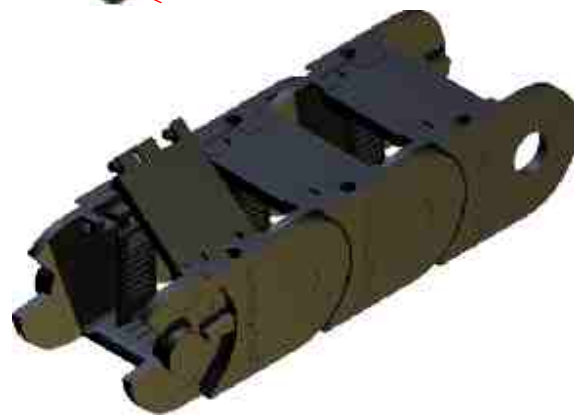
standard type
flap stay in inner radius
integrated connectors

space (axb): 40 x 48 separable (PZ,KL)
bend radius: 75/100/ 125/ 150/ 175/ 200/ 250
weight: 1.30 kg/m
free carrying: 2.4 m at 1.0 kg/m load
pitch: 55

order example:

Kolibri 50.065.0 / 100 x 1265

type / radius x length



Kolibri 50.065.5

Kolibri 21.5

colsed type
flap covers in outer radius
integrated connectors

space (axb): 40 x 48 separable (PZ,KL)
bend radius: 100 / 150 / 200 / 250
weight: 1.30 kg/m
free carrying length: 2.4 m at 1.0 kg/m load
pitch: 55

order example:

Kolibri 50.065.5 / 100 x 1265

type / radius x length



Kolibri 50.095.0

Kolibri 19.0

standard type
flap stay in inner radius
integrated connectors

space (axb): 40 x 78 separable (PZ,KL)
bend radius: 75/100/ 125/ 150/ 175/ 200/ 250
weight: 1.35 kg/m
free carrying length: 2.4 m at 1.0 kg/m load
pitch: 55

order example:

Kolibri 50.095.0 / 100 x 1265

type / radius x length



Kolibri 50.095.2

Kolibri 19.2

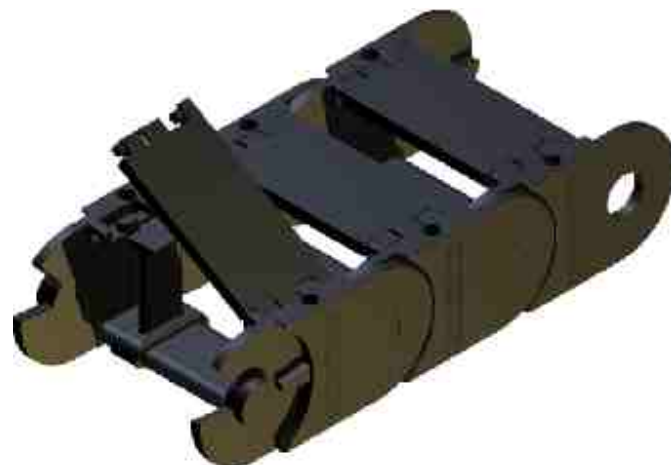
rigid type
flap stay in inner radius
integrated connectors

space (axb): 38 x 78 separable (PZ,KL)
bend radius: 75/100/ 125/ 150/ 175/ 200/ 250
weight: 1.40 kg/m
free carrying length: 2.4 m at 1.0 kg/m load
pitch: 55

order example:

Kolibri 50.095.2 / 100 x 1265

type / radius x length





Kolibri HEIGHT 50

inner height 38 to 40, inner width 48 to 134



Kolibri 50.095.5

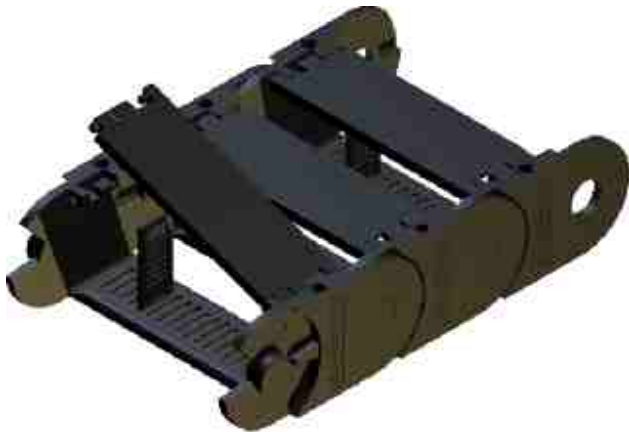
Kolibri 19.5

closed type
flap stay in outer radius
integrated connectors
space (axb): 40 x 78 separable (PZ,KL)
bend radius: 75/100/ 125/ 150/ 175/ 200/ 250
weight: 1.40 kg/m
free carrying length: 2.4 m at 1.0 kg/m load
pitch: 55

order example:

Kolibri 50.095.5 / 100 x 1265

type / radius x length



Kolibri 50.125.0

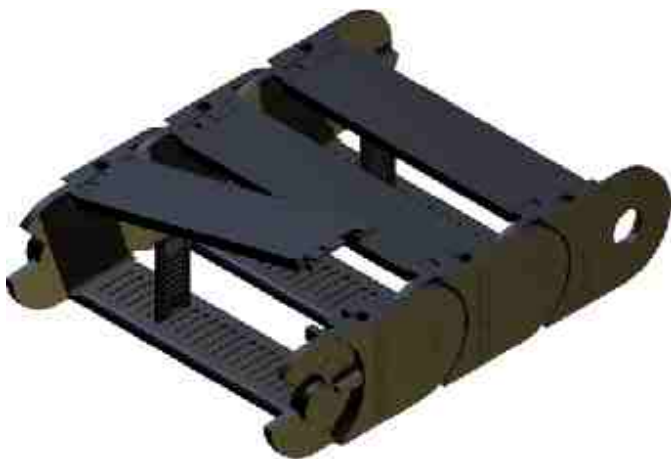
Kolibri 22.0

standard type
flap stay in inner radius
integrated connectors
space (axb): 40 x 108 separable (PZ,KL)
bend radius: 75 / 100 / 150 / 200 / 250
weight: 1.52 kg/m
free carrying length: 2.4 m at 1.0 kg/m load
pitch: 55

order example:

Kolibri 50.125.0 / 100 x 1265

type / radius x length



Kolibri 50.150.0

Kolibri 20.0

standard type
flap stay in inner radius
integrated connectors
space (axb): 40 x 133 separable (PZ,KL)
bend radius: 75 / 100 / 150 / 200 / 250
weight: 1.90 kg/m
free carrying length: 2.4 m at 1.0 kg/m load
pitch: 55

order example:

Kolibri 50.150.0 / 100 x 1265

type / radius x length



Kolibri 50.150.5

Kolibri 20.5

closed type
flap stay in outer radius
integrated connectors
space (axb): 40 x 133 separable (PZ,KL)
Bibend radius: 75 / 100 / 150 / 200 / 250
weight: 1.90 kg/m
free carrying length: 2.4 m at 1.0 kg/m load
pitch: 55

order example:

Kolibri 50.150.5 / 100 x 1265

type / radius x length

Kolibri HEIGHT 65

inner height 50, inner width 77 to 205



Kolibri 65.095.1 *Kolibri 24.1*

open type
flap stay in outer radius
integrated connectors
space (axb): 50 x 77 separable (PZ, KL)
bend radius: 125 / 150 / 200 / 300
weight: 2.2 kg/m
free carrying length: 2.75 m at 1.0 kg/m load
pitch: 70

order example:

Kolibri 65.095.1 / 100 x 1400

type / radius x length



Kolibri 65.095.5 *Kolibri 24.5*

closed type
flap cover in outer radius
integrated connectors
space (axb): 50 x 77 separable (PZ, KL)
bend radius: 125 / 150 / 200 / 300
weight: 2.2 kg/m
free carrying length: 2.75 m at 1.0 kg/m load
pitch: 70

order example:

Kolibri 65.095.5 / 100 x 1400

type / radius x length



Kolibri 65.135.1 *Kolibri 25.1*

open type
flap stay in outer radius
integrated connectors
space (axb): 50 x 117 separable (PZ, KL)
bend radius: 125 / 150 / 200 / 300 / 400
weight: 2.6 kg/m
free carrying length: 2.75 m at 1.0 kg/m load
pitch: 70

order example:

Kolibri 65.135.1 / 100 x 1400

type / radius x length



Kolibri 65.135.5 *Kolibri 25.5*

closed type
flap cover in outer radius
integrated connectors
space (axb): 50 x 117 separable (PZ, KL)
bend radius: 125 / 150 / 200 / 300 / 400
weight: 2.7 kg/m
free carrying length: 2.75 m at 1.0 kg/m load
pitch: 70

order example:

Kolibri 65.135.1 / 100 x 1400

type / radius x length





Kolibri HEIGHT 65

inner height 50, inner width 77 to 205



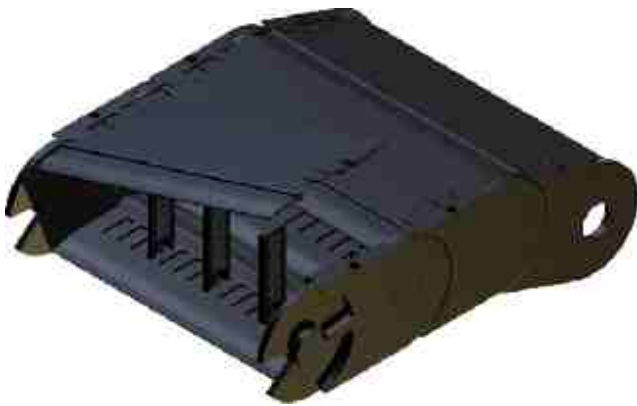
Kolibri 65.195.1 *Kolibri 27.1*

open type
flap stay in outer radius
integrated connectors
space (axb): 50 x 177 separable (PZ,KL)
bend radius: 125 / 150 / 200 / 300
weight: 2.9 kg/m
free carrying length: 2.75 m at 1.0 kg/m load
pitch: 70

order example:

Kolibri 65.195.1 / 100 x 1400

type / radius x length



Kolibri 65.195.5 *Kolibri 27.5*

closed type
flap cover in outer radius
integrated connectors
space (axb): 50 x 177 separable (PZ,KL)
bend radius: 125 / 150 / 200 / 300
weight: 3.0 kg/m
free carrying length: 2.75 m at 1.0 kg/m load
pitch: 70

order example:

Kolibri 65.195.5 / 100 x 1400

type / radius x length



Kolibri 65.225.0 *Kolibri 29.0*

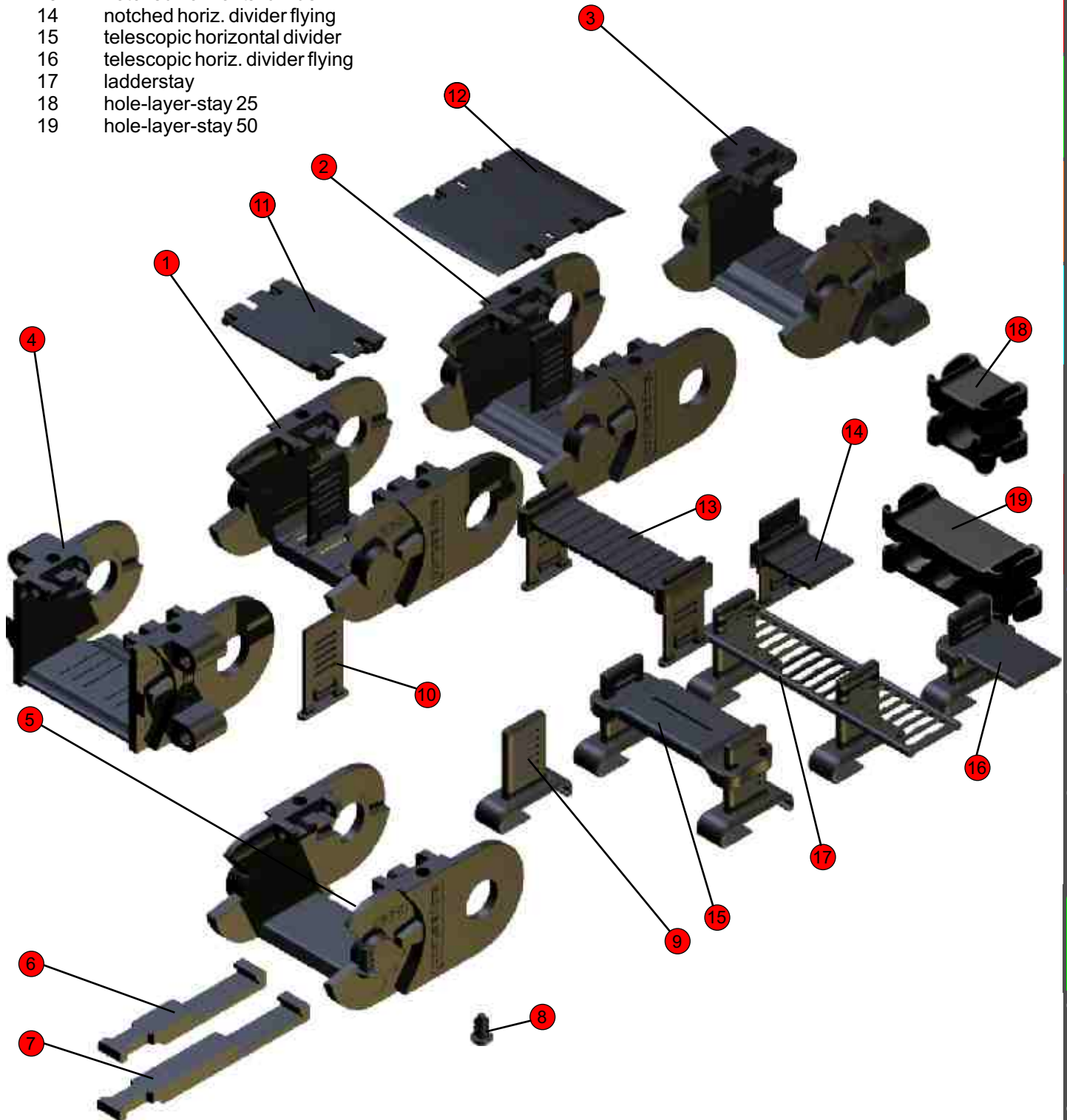
standard type
flap stay in inner radius
integrated connectors
space (axb): 50 x 205 separable (PZ,KL)
bend radius: 100 / 125 / 150 / 200 / 300
weight: 2.71 kg/m
free carrying: 2.75 m at 1.0 kg/m load
pitch: 70

order example:

Kolibri 65.225.0 / 100 x 1400

type / radius x length

- | Pos. | name |
|------|----------------------------------|
| 1 | link (open type) |
| 2 | link (closed type) |
| 3 | flange pivot |
| 4 | flange drilling |
| 5 | horn stay connector |
| 6 | horn stay 65 HS65 |
| 7 | horn stay 85 HS 85 |
| 8 | damping element |
| 9 | PZ (divider) |
| 10 | PZ (pinch stay) |
| 11 | flap stay |
| 12 | flap cover |
| 13 | notched horizontal divider |
| 14 | notched horiz. divider flying |
| 15 | telescopic horizontal divider |
| 16 | telescopic horiz. divider flying |
| 17 | ladderstay |
| 18 | hole-layer-stay 25 |
| 19 | hole-layer-stay 50 |



Opening and closing

Push a screwdriver as shown in the the slot (1) then with a light lever movement (2) raise the tongue and push the locking pins of the flap stay (or the flap cover) out of the drilling. The flap stay can then be lifted (3). To remove the flap stay the second side has to be unlocked and the stay has to be pushed out against the direction of the cones.

The installation of the flap stays and flap covers are snapped in a slight angle with the pins against the corresponding drillings (4) and with slight pressure against the locking tongue.

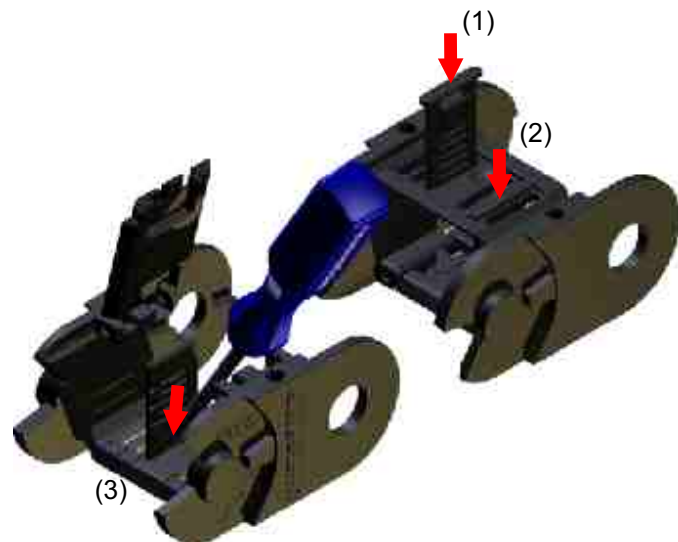
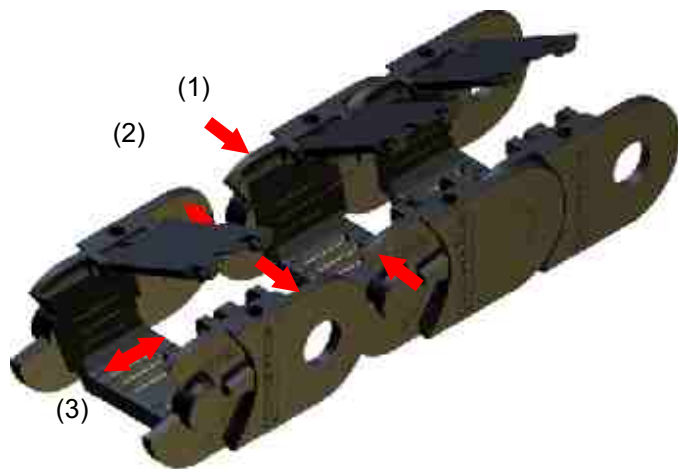
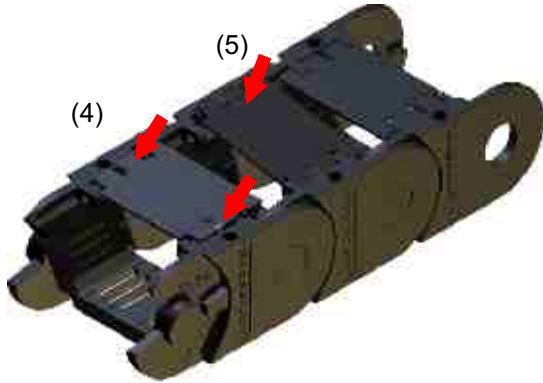
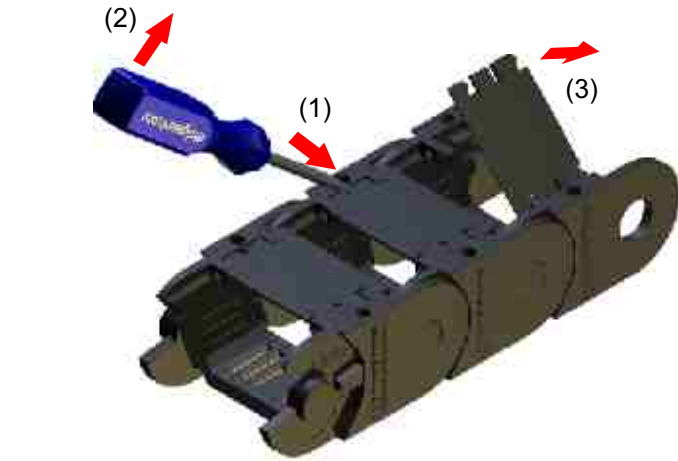
Lifted flap stays can be re-engaged (5) with slight pressure.

Lengthening and shortening

To lengthen or shorten the flap stays have to be opened. The walls with pivot pins are to press internally (1) and the walls with the holes are to press toward the outside (2). The chain links can be pushed together (3), or be pulled apart.

Installation of the flap stays

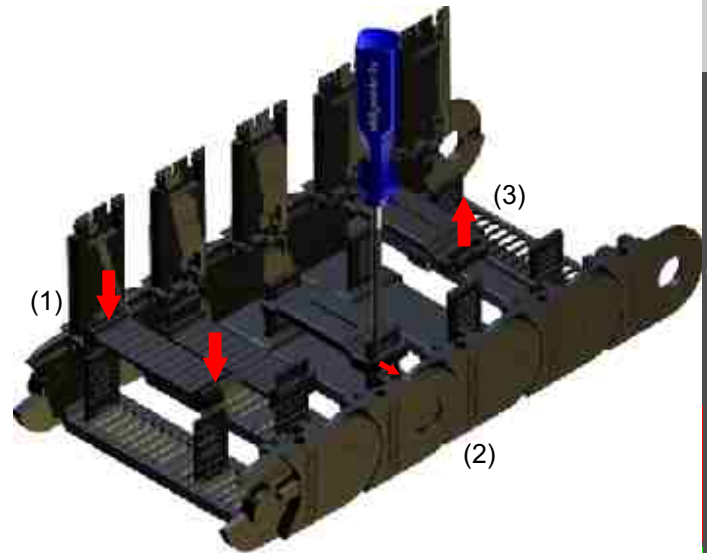
The assembly of the flap stays can take place before or after cable lining. Therefore energy chain does not need to be opened. The flap stays are inserted from the outside chain link floor until snap (1), (2). The dismantling of the stays is done by unlocking the tongue and pushing out (3).



Assembly of horizontal dividers

The horizontal dividers (notched, telescopic and ladder-stay) are horizontally slid onto the vertical dividers (PZ) (1).

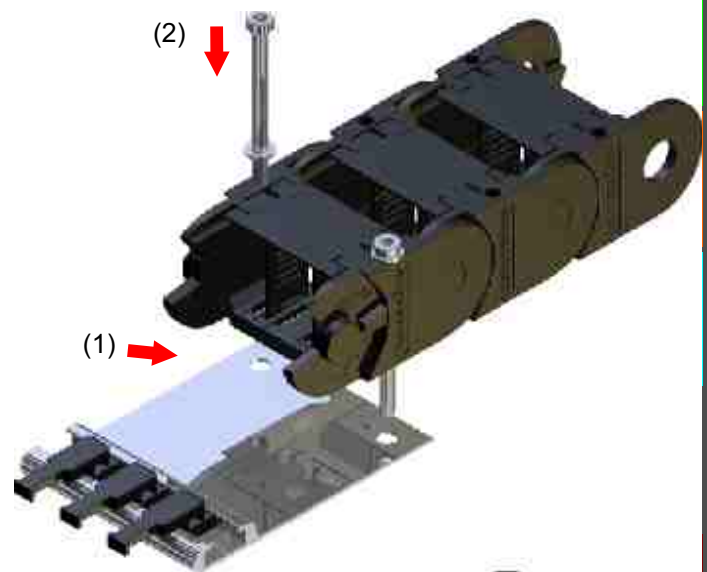
With a screwdriver the locking tongue can be mounted (2) and horizontal dividers disassembled (3).



Mounting the energy chain and strain relief

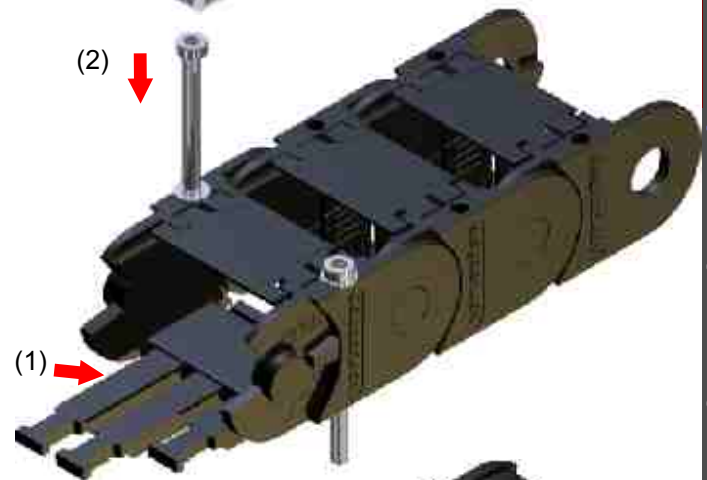
For most applications variable strain relief is recommended, to mount the anchor profile with the energy chain using the integrated connector. (1), (2).

It is also possible to attach the anchor profile as a separate strain relief. The anchor profile is suitable for various strain relief components (see design guidelines).



When using the rigid type (00.000.2) as the final link the respective strain relief components are clipped onto the stay (1). Then the energy chain can be attached through the integrated connectors (2).

The cables can then be fixed using cable ties with the horn stays (HS 65 and HS 85).

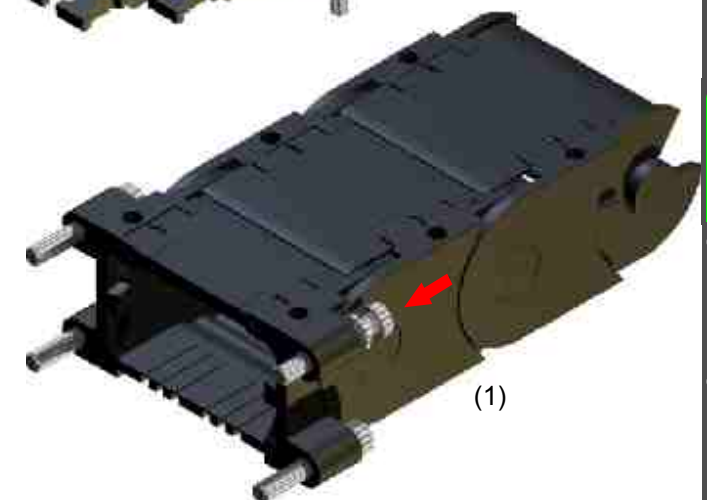


Alternatively, it is possible to mount the cable chains with flush mounting flange type brackets (1).

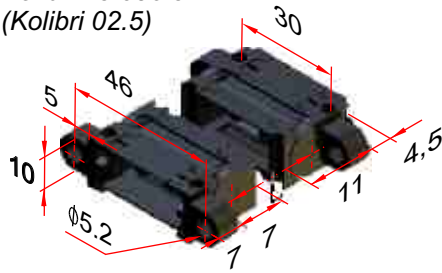
Maintenance of the energy chain

Kolibri energy chains are maintenance free. Like every mechanical system there will - depending on the ambient conditions - wear which must be observed.

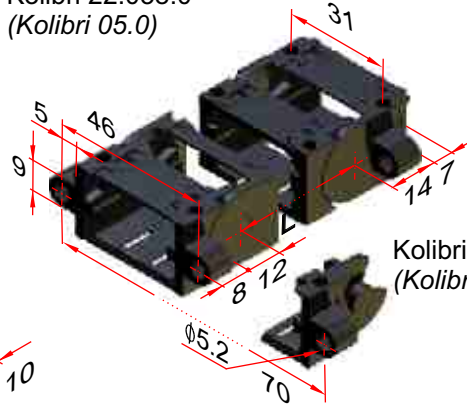
In case of this the energy chainspace has to be exchanged.



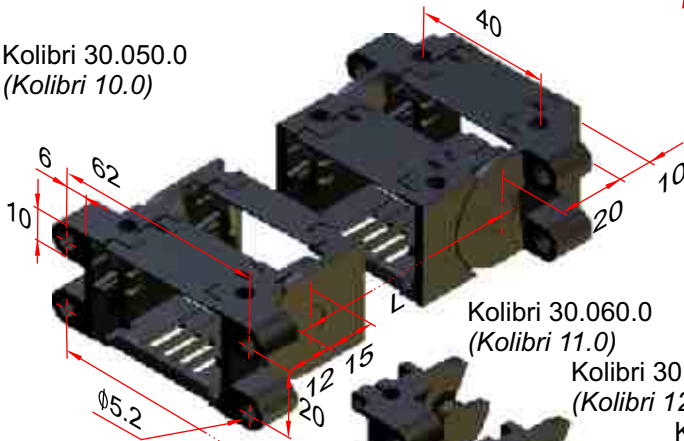
Kolibri 15.036.5
(Kolibri 02.5)



Kolibri 22.038.0
(Kolibri 05.0)



Kolibri 30.050.0
(Kolibri 10.0)



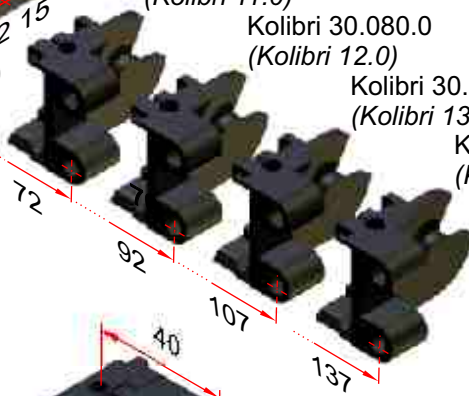
Kolibri 22.060.5
(Kolibri 07.5)

Kolibri 30.060.0
(Kolibri 11.0)

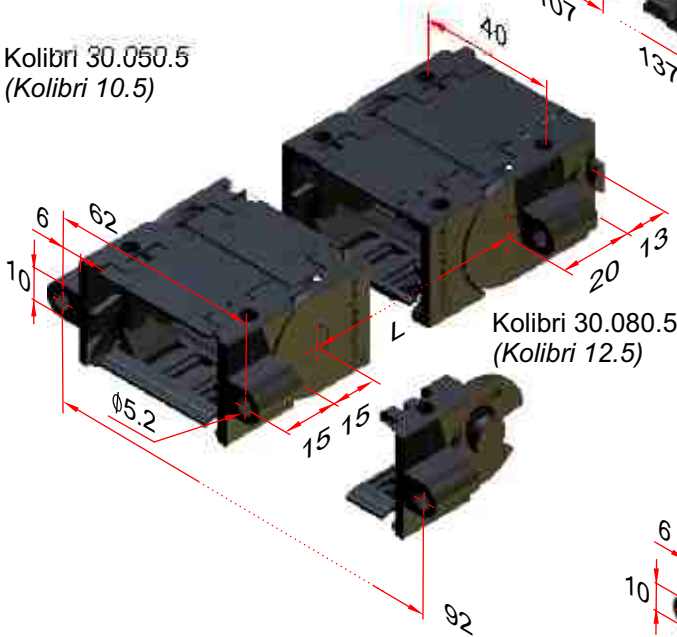
Kolibri 30.080.0
(Kolibri 12.0)

Kolibri 30.095.0
(Kolibri 13.0)

Kolibri 30.125.0
(Kolibri 14.0)

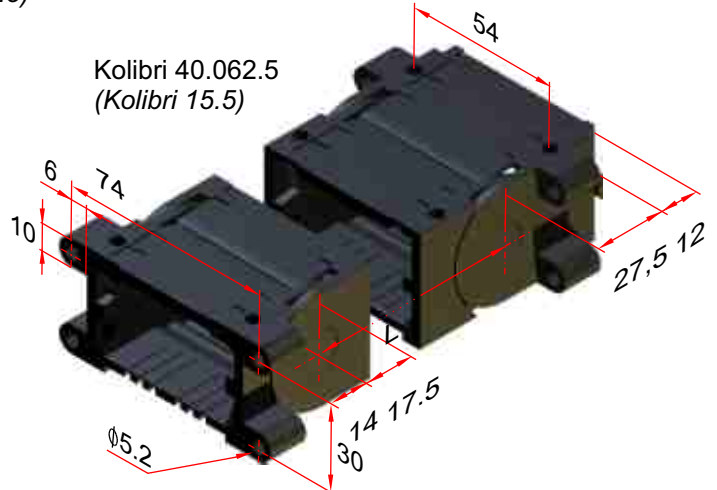


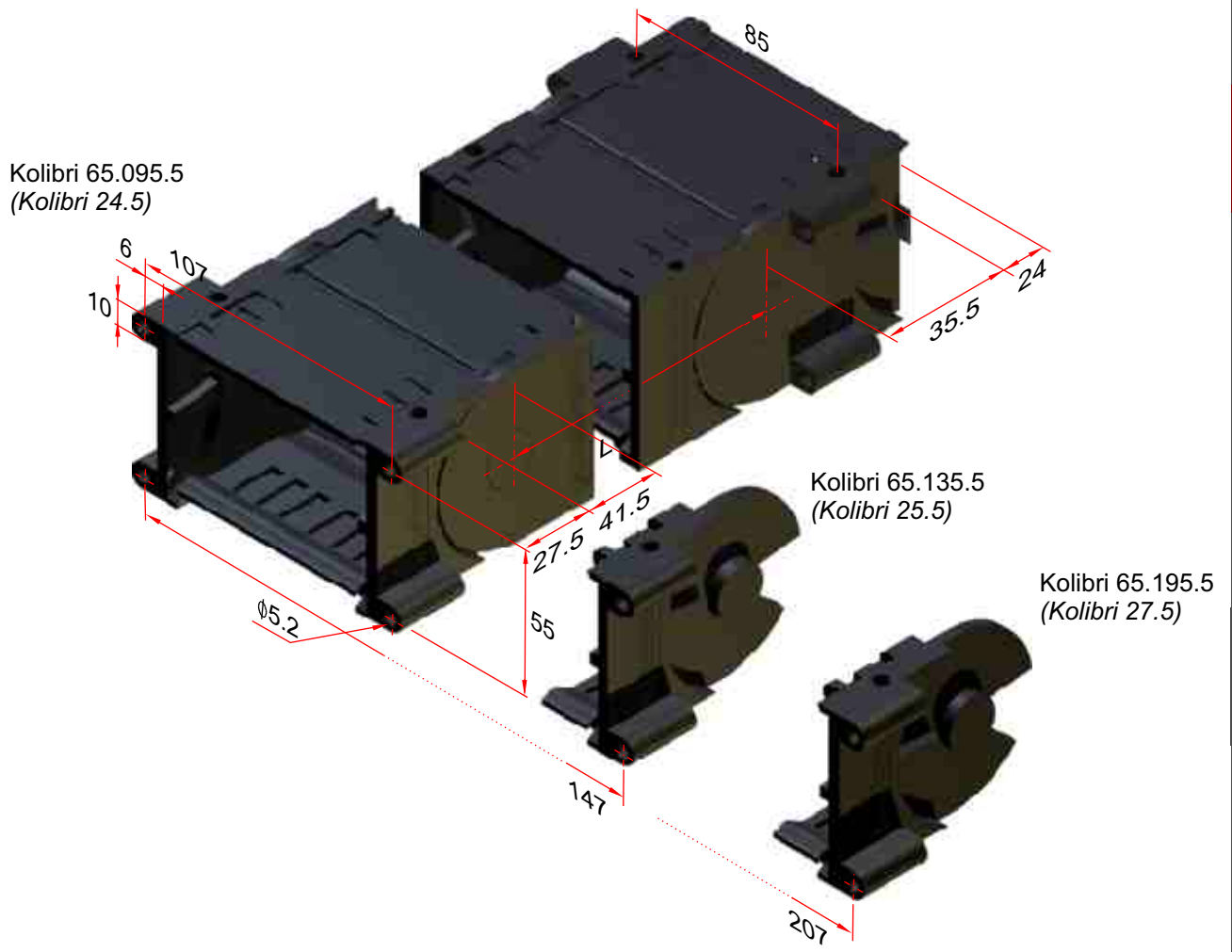
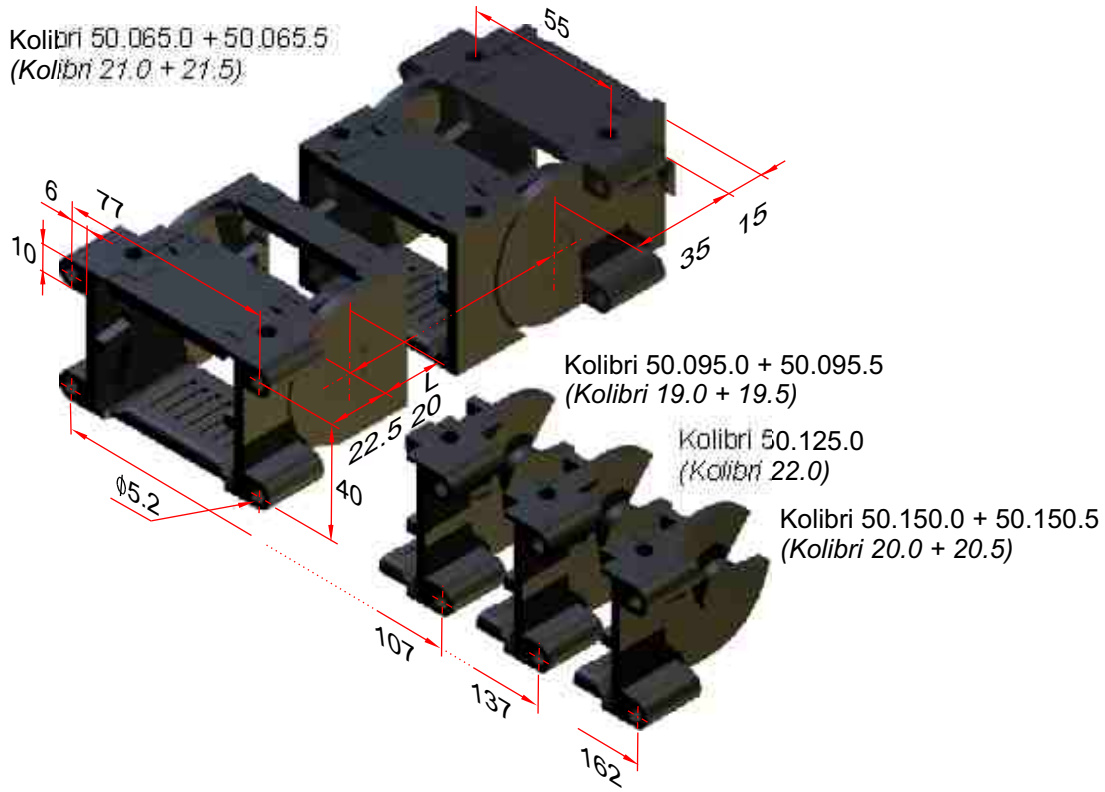
Kolibri 30.050.5
(Kolibri 10.5)



Kolibri 30.080.5
(Kolibri 12.5)

Kolibri 40.062.5
(Kolibri 15.5)

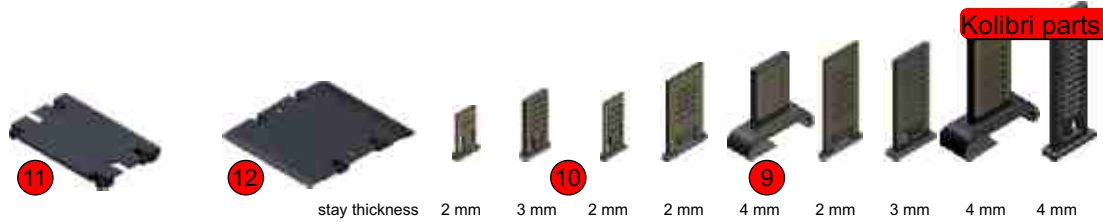




Kolibri parts 39



Kolibri	00.000.0				00.000.1				00.000.2				00.000.3				00.000.4				00.000.5																
	piece goods				(10m-coil)																																
Radius	15	17.5	20	30	35	40	50	60	70	75	100	125	150	175	200	250	300	400																			
10.012.4 (00.3)	1089	-	-	1090	-	-	1091	-	-	-	-	-	-	-	-	-	-	-	-	-	-	-	-	-	-	-	-	-	-	-	-	-	-	-			
15.015.3 (0)	-	1056	0435	0029	-	-	-	-	-	-	-	-	-	-	-	-	-	-	-	-	-	-	-	-	-	-	-	-	-	-	-	-	-	-	-		
15.015.4 (0.3)	-	-	1116	1060	-	-	-	-	-	-	-	-	-	-	-	-	-	-	-	-	-	-	-	-	-	-	-	-	-	-	-	-	-	-	-		
15.036.5 (02.5)	-	-	-	1156	-	-	1157	-	-	-	-	-	-	-	-	-	-	-	-	-	-	-	-	-	-	-	-	-	-	-	-	-	-	-	-		
15.037.3 (02)	-	-	0614	0286	-	-	-	-	-	-	-	-	-	-	-	-	-	-	-	-	-	-	-	-	-	-	-	-	-	-	-	-	-	-	-		
15.051.0 (03)	-	-	0844	0845	-	-	-	-	-	-	-	-	-	-	-	-	-	-	-	-	-	-	-	-	-	-	-	-	-	-	-	-	-	-	-		
22.025.4 (04.3)	-	-	-	-	0981	-	-	-	0982	-	0983	-	-	-	-	-	-	-	-	-	-	-	-	-	-	-	-	-	-	-	-	-	-	-	-		
22.038.0 (05.0)	-	-	-	-	1686	-	1685	-	1684	-	1683	-	-	-	-	-	-	-	-	-	-	-	-	-	-	-	-	-	-	-	-	-	-	-	-		
22.048.0 (06)	-	-	-	-	0840	-	-	-	0841	-	-	-	-	-	-	-	-	-	-	-	-	-	-	-	-	-	-	-	-	-	-	-	-	-	-		
22.060.5 (07.5)	-	-	-	-	-	-	1259	-	1260	-	1261	-	-	-	-	-	-	-	-	-	-	-	-	-	-	-	-	-	-	-	-	-	-	-	-		
30.030.3 (1)	-	-	-	-	-	0457	-	-	-	-	0004	-	-	-	0005	-	-	-	-	-	-	-	-	-	-	-	-	-	-	-	-	-	-	-	-		
30.050.0 (10.0)	-	-	-	-	-	1224	-	1430	-	1225	1222	-	1226	-	1223	-	-	-	-	-	-	-	-	-	-	-	-	-	-	-	-	-	-	-	-		
30.050.1 (10.1)	-	-	-	-	-	-	-	-	-	-	-	-	-	-	-	-	-	-	-	-	-	-	-	-	-	-	-	-	-	-	-	-	-	-	-		
30.050.5 (10.5)	-	-	-	-	-	-	-	1002	-	1010	1008	-	1011	-	1004	-	-	-	-	-	-	-	-	-	-	-	-	-	-	-	-	-	-	-	-	-	
30.060.0 (11.0)	-	-	-	-	-	1229	1377	-	-	1230	1227	-	1231	-	1228	-	-	-	-	-	-	-	-	-	-	-	-	-	-	-	-	-	-	-	-	-	
30.060.1 (11.1)	-	-	-	-	-	-	-	-	-	-	-	-	-	-	-	-	-	-	-	-	-	-	-	-	-	-	-	-	-	-	-	-	-	-	-	-	
30.080.0 (12.0)	-	-	-	-	-	1235	-	-	-	1236	1232	-	1233	-	1234	-	-	-	-	-	-	-	-	-	-	-	-	-	-	-	-	-	-	-	-	-	
30.080.1 (12.1)	-	-	-	-	-	-	-	-	-	-	-	-	-	-	-	-	-	-	-	-	-	-	-	-	-	-	-	-	-	-	-	-	-	-	-	-	
30.080.2 (12.2)	-	-	-	-	-	-	-	-	-	1394	1621	-	-	-	-	-	-	-	-	-	-	-	-	-	-	-	-	-	-	-	-	-	-	-	-	-	
30.080.4	-	-	-	-	-	-	-	-	-	-	-	-	-	-	-	-	-	-	-	-	-	-	-	-	-	-	-	-	-	-	-	-	-	-	-	-	
30.080.5 (12.5)	-	-	-	-	-	-	-	1798	-	-	1795	-	1796	-	1797	-	-	-	-	-	-	-	-	-	-	-	-	-	-	-	-	-	-	-	-	-	
30.095.0 (13.0)	-	-	-	-	-	1239	-	-	-	1240	1352	1324	1241	-	1238	-	-	-	-	-	-	-	-	-	-	-	-	-	-	-	-	-	-	-	-	-	
30.095.1 (13.1)	-	-	-	-	-	-	-	-	-	-	-	-	-	-	-	-	-	-	-	-	-	-	-	-	-	-	-	-	-	-	-	-	-	-	-	-	
30.125.0 (14.0)	-	-	-	-	-	-	-	-	-	-	-	-	-	-	-	-	-	-	-	-	-	-	-	-	-	-	-	-	-	-	-	-	-	-	-	-	
30.125.1 (14.1)	-	-	-	-	-	-	-	-	-	-	-	-	-	-	-	-	-	-	-	-	-	-	-	-	-	-	-	-	-	-	-	-	-	-	-	-	
40.062.2 (15.0)	-	-	-	-	-	-	-	1489	-	1490	1491	-	1492	-	1493	-	-	-	-	-	-	-	-	-	-	-	-	-	-	-	-	-	-	-	-	-	
40.062.5 (15.5)	-	-	-	-	-	-	-	-	-	1152	1163	-	1154	-	1155	-	-	-	-	-	-	-	-	-	-	-	-	-	-	-	-	-	-	-	-	-	
40.075.2 (16.0)	-	-	-	-	-	-	-	1484	-	1485	1486	-	1487	-	1488	-	-	-	-	-	-	-	-	-	-	-	-	-	-	-	-	-	-	-	-	-	
50.065.0 (21.0)	-	-	-	-	-	-	-	-	-	0971	0972	1256	0973	1751	0974	0975	-	-	-	-	-	-	-	-	-	-	-	-	-	-	-	-	-	-	-	-	
50.065.5 (21.5)	-	-	-	-	-	-	-	-	-	-	1005	-	1006	-	1007	1008	-	-	-	-	-	-	-	-	-	-	-	-	-	-	-	-	-	-	-	-	
50.095.0 (19.0)	-	-	-	-	-	-	-	-	-	1138	1148	1431	1139	1325	1140	1141	-	-	-	-	-	-	-	-	-	-	-	-	-	-	-	-	-	-	-	-	-
50.095.2 (19.2)	-	-	-	-	-	-	-	-	-	1619	1644	1483	1370	-	-	-	-	-	-	-	-	-	-	-	-	-	-	-	-	-	-	-	-	-	-	-	-
50.095.5 (19.5)	-	-	-	-	-	-	-	-	-	-	1012	-	1013	-	1014	1016	-	-	-	-	-	-	-	-	-	-	-	-	-	-	-	-	-	-	-	-	-
50.125.0 (22.0)	-	-	-	-	-	-	-	-	-	1292	1288	-	1289	-	1290	1291	-	-	-	-	-	-	-	-	-	-	-	-	-	-	-	-	-	-	-	-	-
50.150.0 (20.0)	-	-	-	-	-	-	-	-	-	1287	1283	-	1284	-	1285	1286	-	-	-	-	-	-	-	-	-	-	-	-	-	-	-	-	-	-	-	-	-
50.150.5 (20.5)	-	-	-	-	-	-	-	-	-	-	1061	-	1062	-	1063	1064	-	-	-	-	-	-	-	-	-	-	-	-	-	-	-	-	-	-	-	-	-
65.095.1 (24.1)	-	-	-	-	-	-	-	-	-	-	-	-	-	-	-	-	-	-	-	-	-	-	-	-	-	-	-	-	-	-	-	-	-	-	-	-	
65.095.5 (24.5)	-	-	-	-	-	-	-	-	-	-	-	-	1084	1085	-	1086	-	1087	-	-	-	-	-	-	-	-	-	-	-	-	-	-	-	-	-	-	
65.135.1 (25.1)	-	-	-	-	-	-	-	-	-	-	-	-	-	-	-	-	-	-	-	-	-	-	-	-	-	-	-	-	-	-	-	-	-	-	-	-	
65.135.5 (25.5)	-	-	-	-	-	-	-	-	-	-	-	-	1076	1077	-	1078	-	1079	1752	-	-	-	-	-	-	-	-	-	-	-	-	-	-	-	-	-	
65.195.1 (27.1)	-	-	-	-	-	-	-	-	-	-	-	-	-	-	-	-	-	-	-	-	-	-	-	-	-	-	-	-	-	-	-	-	-	-	-	-	
65.195.5 (27.5)	-	-	-	-	-	-	-	-	-	-	-	-	1080	1081	-	1082	-	1083	-	-	-	-	-	-	-	-	-	-	-	-	-	-	-	-	-	-	
65.225.0 (29.0)	-	-	-	-	-	-	-	-	-	-	-	1356	1359	1357	-	1358	-	1360	-	-	-	-	-	-	-	-	-	-	-	-	-	-	-	-	-	-	-



Kolibri parts 39

Kolibri

10.012.4	-	-	-	-	-	-	-	-	-	-	-	-
15.015.3	-	-	-	-	-	-	-	-	-	-	-	-
15.015.4	-	-	-	-	-	-	-	-	-	-	-	-
15.036.5	-	1708	-	-	-	-	-	-	-	-	-	-
15.037.3	-	-	-	-	-	-	-	-	-	-	-	-
15.051.0	1707	-	-	-	-	-	-	-	-	-	-	-
22.025.4	-	-	-	-	-	-	-	-	-	-	-	-
22.038.0	1687	-	-	-	-	-	-	-	-	-	-	-
22.048.0	1707	-	-	-	-	-	-	-	-	-	-	-
22.060.5	-	1709	1294	-	-	-	-	-	-	-	-	-
30.030.3	-	-	-	-	-	-	-	-	-	-	-	-
30.050.0	1698	-	-	1258	-	-	-	-	-	-	-	-
30.050.1	1698	-	-	1258	-	-	-	-	-	-	-	-
30.050.5	-	1710	-	-	1017	-	-	-	-	-	-	-
30.060.0	1697	-	-	1258	-	-	-	-	-	-	-	-
30.060.1	1697	-	-	1258	-	-	-	-	-	-	-	-
30.080.0	1695	-	-	1258	-	-	-	-	-	-	-	-
30.080.1	1695	-	-	1258	-	-	-	-	-	-	-	-
30.080.2	1695	-	-	-	-	-	-	-	-	-	-	-
30.080.4	-	-	-	-	-	-	-	-	-	-	-	-
30.080.5	-	-	-	-	1017	-	-	-	-	-	-	-
30.095.0	1696	-	-	1258	-	-	-	-	-	-	-	-
30.095.1	1696	-	-	1258	-	-	-	-	-	-	-	-
30.125.0	1706	-	-	1258	-	-	-	-	-	-	-	-
30.125.1	1706	-	-	1258	-	-	-	-	-	-	-	-
40.062.2	1694	-	-	-	-	-	1521	-	-	-	-	-
40.062.5	-	1577	-	-	-	1268	-	-	-	-	-	-
40.075.2	1693	-	-	-	-	-	1521	-	-	-	-	-
50.065.0	1692	-	-	-	-	-	-	1113	-	-	-	-
50.065.5	-	1711	-	-	-	-	-	1113	-	-	-	-
50.095.0	1691	-	-	-	-	-	-	1113	-	-	-	-
50.095.2	1691	-	-	-	-	-	-	-	-	1451	-	-
50.095.5	1655	-	-	-	-	-	-	1113	-	-	-	-
50.125.0	1320	-	-	-	-	-	-	-	1326	-	-	-
50.150.0	1318	-	-	-	-	-	-	-	1326	-	-	-
50.150.5	1624	-	-	-	-	-	-	1113	-	-	-	-
65.095.1	1470	-	-	-	-	-	-	-	-	-	-	1129
65.095.5	-	1625	-	-	-	-	-	-	-	-	-	1129
65.135.1	1354	-	-	-	-	-	-	-	-	-	-	1129
65.135.5	-	1626	-	-	-	-	-	-	-	-	-	1129
65.195.1	1355	-	-	-	-	-	-	-	-	-	-	1129
65.195.5	-	1627	-	-	-	-	-	-	-	-	-	1129
65.225.0	1623	-	-	-	-	-	-	-	-	-	-	1129

Kolibri parts 39



Kolibri	FK	notched hor. divider flying	ladderstay	PTF flying	PT 55 55-80	PT 75 75-100	whole horizontal divider 25	50	head side flange
---------	----	-----------------------------	------------	------------	-------------	--------------	-----------------------------	----	------------------

10.012.4	-	-	-	-	-	-	-	-	-	
15.015.3	-	-	-	-	-	-	-	-	-	
15.015.4	-	-	-	-	-	-	-	-	-	
15.036.5	-	-	-	-	-	-	-	-	1339	
15.037.3	-	-	-	-	-	-	-	-	-	
15.051.0	-	-	-	-	-	-	-	-	-	
22.025.4	-	-	-	-	-	-	-	-	-	
22.038.0	-	-	-	-	-	-	-	-	1745	
22.048.0	-	-	-	-	-	-	-	-	-	
22.060.5	-	1127	-	-	-	-	-	-	1340	
30.030.3	-	-	-	-	-	-	-	-	-	
30.050.0	1363	-	-	-	-	-	-	-	1329	
30.050.1	1363	-	-	-	-	-	-	-	1329	
30.050.5	1363	1127	-	-	-	-	-	-	1341	
30.060.0	1363	-	-	-	-	-	-	-	1330	
30.060.1	1363	-	-	-	-	-	-	-	1330	
30.080.0	1363	-	-	-	-	-	-	-	1331	
30.080.1	1363	-	-	-	-	-	-	-	1331	
30.080.2	1363	-	-	1665	1234	-	-	1663	1664	1331
30.080.4	1363	-	-	-	-	-	-	-	-	1331
30.080.5	1363	1127	-	-	-	-	-	-	-	-
30.095.0	1363	-	-	-	-	-	-	-	-	1332
30.095.1	1363	-	-	-	-	-	-	-	-	1331
30.125.0	1363	-	-	-	-	-	-	-	-	1333
30.125.1	1363	-	-	-	-	-	-	-	-	1333
40.062.2	1363	-	-	1665	1234	-	-	1663	-	1343
40.062.5	1363	-	-	-	-	-	-	-	-	1343
40.075.2	1363	-	-	1665	1234	-	-	1663	-	-
50.065.0	1269	1127	-	-	-	-	-	-	-	1336
50.065.5	1269	1127	-	-	-	-	-	-	-	1336
50.095.0	1269	1127	1127	-	-	-	-	-	-	1334
50.095.2	1269	-	-	1665	1234	-	-	1663	1664	-
50.095.5	1269	1127	1127	-	-	-	-	-	-	1344
50.125.0	1269	-	-	-	-	-	-	-	-	1348
50.150.0	1269	-	-	-	-	-	-	-	-	1335
50.150.5	1269	1127	1127	-	-	-	-	-	-	1345
65.095.1	1269	-	-	1665	1234	0879	-	1663	1664	1347
65.095.5	1269	-	-	1665	1234	0879	-	1663	1664	1347
65.135.1	1269	-	-	1665	1234	0879	0880	1663	1664	1348
65.135.5	1269	-	-	1665	1234	0879	0880	1663	1664	1348
65.195.1	1269	-	-	1665	1234	0879	0880	1663	1664	1349
65.195.5	1269	-	-	1665	1234	0879	0880	1663	1664	1349
65.225.0	1269	-	-	1665	1234	0879	0880	1663	1664	-

Kolibri PART NUMBERS



Kolibri anchor profile ZL50 blue ribbon ZLA 8 (PZ SLP220) HS10 ZLA10 HS55 HS65 HS75 HS85

10.012.4	-	-	-	-	-	-	-	-	-	-	-
15.015.3	-	-	-	-	-	-	-	-	-	-	-
45.015.4	-	-	-	-	-	-	-	-	-	-	-
15.036.5	-	-	-	-	-	-	-	-	-	-	-
15.037.3	-	-	-	-	-	-	-	-	-	-	-
15.051.0	-	-	-	-	-	-	-	-	-	-	-
22.025.4	1163	-	1142	1159	0778	1407	1160	-	-	-	-
22.038.0	1163	-	1142	1159	0778	1407	1160	-	-	-	-
22.048.0	1163	-	1142	1159	0778	1407	1160	-	-	-	-
22.060.5	1163	-	1142	1159	0778	1407	1160	-	-	-	-
30.030.3	1163	-	1142	1159	0778	1407	1160	-	-	-	-
30.050.0	1163	-	1142	1159	0778	1407	1160	1802	-	-	-
30.050.1	1163	-	1142	1159	0778	1407	1160	1802	-	-	-
30.050.5	1163	-	1142	1159	0778	1407	1160	-	-	-	-
30.060.0	1163	-	1142	1159	0778	1407	1160	1802	-	-	-
30.060.1	1163	-	1142	1159	0778	1407	1160	1802	-	-	-
30.080.0	1163	-	1142	1159	0778	1407	1160	1802	1503 ¹⁾	-	1504 ¹⁾
30.080.1	1163	-	1142	1159	0778	1407	1160	1802	1503 ¹⁾	-	1504 ¹⁾
30.080.2	1163	-	1142	1159	0778	1407	1160	-	1503	-	1504
30.080.4	1163	-	1142	1159	0778	1407	1160	-	1503	-	1504
30.080.5	1163	-	1142	1159	0778	1407	1160	-	-	-	-
30.095.0	1163	-	1142	1159	0778	1407	1160	1802	-	-	-
30.095.1	1163	-	1142	1159	0778	1407	1160	1802	-	-	-
30.125.0	1163	-	1142	1159	0778	1407	1160	1802	-	-	-
30.125.1	1163	-	1142	1159	0778	1407	1160	1802	-	-	-
40.062.2	1163	-	1142	1159	0778	1407	1160	-	1503	-	1504
40.062.5	1163	-	1142	1159	0778	1407	1160	-	-	-	-
40.075.2	1163	-	1142	1159	0778	1407	1160	-	1503	-	1504
50.065.0	1163	1273	1142	1159	-	1407	1160	-	-	-	-
50.065.5	1163	1273	1142	1159	-	1407	1160	-	-	-	-
50.095.0	1163	1273	1142	1159	-	1407	1160	-	1503 ¹⁾	-	1504 ¹⁾
50.095.2	1163	1273	1142	1159	-	1407	1160	-	1503	-	1504
50.095.5	1163	1273	1142	1159	-	1407	1160	-	-	-	-
50.125.0	1163	1273	1142	1159	-	1407	1160	-	-	-	-
50.150.0	1163	1273	1142	1159	-	1407	1160	-	1503 ¹⁾	-	1504 ¹⁾
50.150.5	1163	1273	1142	1159	-	1407	1160	-	-	-	-
65.095.1	1163	1273	1142	1159	-	1407	1160	-	-	-	-
65.095.5	1163	1273	1142	1159	-	1407	1160	-	-	-	-
65.135.1	1163	1273	1142	1159	-	1407	1160	-	-	-	-
65.135.5	1163	1273	1142	1159	-	1407	1160	-	-	-	-
65.195.1	1163	1273	1142	1159	-	1407	1160	-	-	-	-
65.195.5	1163	1273	1142	1159	-	1407	1160	-	-	-	-
65.225.0	1163	1273	1142	1159	-	1407	1160	-	-	-	-

¹⁾ with horn stay connectors